

“NETWORK OF DANUBE WATERWAY ADMINISTRATIONS” – data & user orientation

SOUTH EAST EUROPE TRANSNATIONAL COOPERATION PROGRAMME

“ATLAS OF BERTH”

ROMANIA

RIVER ADMINISTRATION OF THE LOWER DANUBE GALATI

PILOT SECTOR

Document ID	O.4.2.1
Activity	Act. 4.2
Author/organisation	Version/date
Teodor TANASESCU - Daniel GROSU / AFDJ	V1 / 30.06.2014
Teodor TANASESCU - Daniel GROSU / AFDJ	V2 / 07.11.2014
Teodor TANASESCU - Daniel GROSU / AFDJ	



TABLE OF CONTENTS

1	SCOPE OF DOCUMENT .	4
2	OVERVIEW LIST OF THE BERTHS / MOORING PLACES .	5
2.1.	Explanation .	7

LIST OF ABBREVIATIONS

ABBR	ABBREVIATION
AoB	Atlas of Berth
ARS	Along River Stretch
IENC	Inland Electronic Navigational Charts

1 SCOPE OF DOCUMENT

The "atlas of berths" is a document containing relevant information where a skipper can berth his vessel and what kind of infrastructure is available there. Hence, he will be able to find information such as the coordinates of the berth, the river kilometre, operating hours, the closest port nearby, vessels which are / are not allowed to stay there and provision of electricity, fresh water and waste disposal facilities. Furthermore, a map of the vicinity will be provided as well as a real-life pictures which will serve for orientation.

In some countries national harmonisation efforts might be necessary to collect all the necessary information. The availability of the "atlas of berths" can also be used as a basis for national feasibility concepts regarding the establishment of additional berths. However, these studies will not be part of NEWADA duo.

2 OVERVIEW LIST OF THE BERTHS / MOORING PLACES

Backwater section (power plant) = name of the river section	River km		berth/mooring place (name)	useable length of the berth in meters	river bank* ¹	Location of the berth* ²	construction of the river bank* ³	local berth conditions* ⁴	width of the berthing area on the water* ⁵
	From	To							
DANUBE	628.8	629.05	Berth for cereals	200	L	ARS	E	0	50 m
DANUBE	629.05	629.3	Berth for cereals	250	L	ARS	E	0	40 m
DANUBE	629.4	629.7	Transshipment Berth	300	L	ARS	E	0	35 m
DANUBE	629.7	629.8	Berth for cereals	100	L	ARS	E	0	30 m
DANUBE	678.4	687.4	Heavy equipment Berth	30	L	ARS	QW	0	30 m
DANUBE	678.4	687.6	Berth without transshipment	200	L	ARS	E	0	50 m
DANUBE	678.6	678.7	Berth without transshipment	100	L	ARS	E	0	50 m
DANUBE	679.0	679.1	Berth without transshipment	100	L	ARS	E	0	50 m
DANUBE	793.9	794.0	Mooring place	80	L	ARS	PO	0	20 m
DANUBE	794.0	794.0	Berth for cereals	50	L	ARS	PO	0	40 m
DANUBE	794.3	794.5	Berth for general cargo	200	L	ARS	QW	0	50 m
DANUBE	794.6	794.7	Mooring place - Pontoon	100	L	ARS	PO	0	50 m

* in meters or max. number of vessels permitted to berth abreast

Backwater section (power plant) = name of the river section	River km		berth/mooring place (name)	useable length of the berth in meters	river bank* ¹	Location of the berth* ²	construction of the river bank* ³	local berth conditions* ⁴	width of the berthing area on the water* ⁵
	From	To							
DANUBE	931.0	931.2	Berth for loading – unloading general cargo	200	L	ARS	QW	0	45 m
DANUBE	931.5	931.6	Mooring place – Shipyard	100	L	ARS	QW	0	30 m
DANUBE	932.6	932.9	Berth for loading – unloading general cargo	300	L	ARS	QW	0	35 m
DANUBE	932.8	932.9	Berth for general cargo	100	L	ARS	QW	0	20 m
DANUBE	933.9	934.1	Berth area – Basin Drobeta Tr. Severin Harbour	200	L	ARS	QW	0	50 m
DANUBE	1048.74	1049.0	Berth for general cargo	160	L	ARS	QW	0	50 m
DANUBE	1049.0	1049.3	Berth for cereals and cargo	300	L	ARS	QW	0	50 m

* in meters or max. number of vessels permitted to berth abreast

2.1. Explanation

river bank* ¹	L	left river bank
	R	right river bank
	D	at the dam
location* ²	DPP	"downstream" side of a power plant
	DL	"downstream" side of a lock (lock entrance area)
	UL	"upstream" side of a lock (lock entrance area)
	UPP	"upstream" side of a power plant
	ARS	along the river stretch

construction (of the river bank) * ³	SPW	sheet pile wall
	E	embankment
	QW	quay wall
	DA	dam
	DO	dolphins
	NA	natural (wild)
width of the berthing area* ⁵	X	maximum number of vessels permitted to berth abreast
local berth conditions* ⁴ (berthing order)	0	berthing permitted (i.e. anchoring or making fast to the bank)
	1	berthing area reserved for pushing-navigation vessels that are required to carry one blue cone
	2	berthing area reserved for pushing-navigation vessels that are required to carry two blue cones
	3	berthing area reserved for pushing-navigation vessels that are required to carry three blue cones

Berth for general cargo

Danube km: 628.8 - 629.0

GPS coordinates:

North: 43° 46' 15.51"

East: 24° 31' 34.95"

berths information

length: 200 m

river bank

- ☒ L left river bank
☐ R right river bank
☐ T at the dam

location

- DPP "downstream" side of a power plant
DL "downstream" side of a lock (lock entrance area)
UL "upstream" side of a lock (lock entrance area)
UPP "upstream" side of a power plant
ARS along the river stretch
OTH others (before a harbour entrance in an old river branch)

local berths conditions

- 0 berthing permitted (i.e. anchoring or making fast to the bank)
1 berthing area reserved for pushing-navigation vessels that are required to carry one blue cone
2 berthing area reserved for pushing-navigation vessels that are required to carry two blue cones
3 berthing area reserved for pushing-navigation vessels that are required to carry three blue cones
OTH other restrictions (only for small motor crafts, only for border control, only for damaged vessels after an accident, max. time allowed for berthing,...))

facilities

stairs to go ashore

- ☒ yes ☐ no

possibility to load and unload cars from a vessel

- ☐ yes ☒ no

lighting

- ☐ yes ☒ no

river bank construction

- ☐ sheet pile wall
☒ embankment (slope)
☐ quay walls
☐ dam
☐ dolphins
☐ pontoon
☐ natural (wild)

specimen widths

- ☐ 1 beam
☐ 2 beams
☐ 3 beams
☒ 50

connections

ports/harbours in the surrounding area

- ☒ < 5 km Corabia

villages, cities in the surrounding area

- ☒ < 5 km Corabia

access road

- ☒ yes ☐ no

maintenance and disposal facilities

electricity supply

- ☐ yes ☒ no

fresh water supply

- ☐ yes ☒ no

waste disposal

- ☐ yes ☒ no

petrol station

- ☐ yes ☒ no

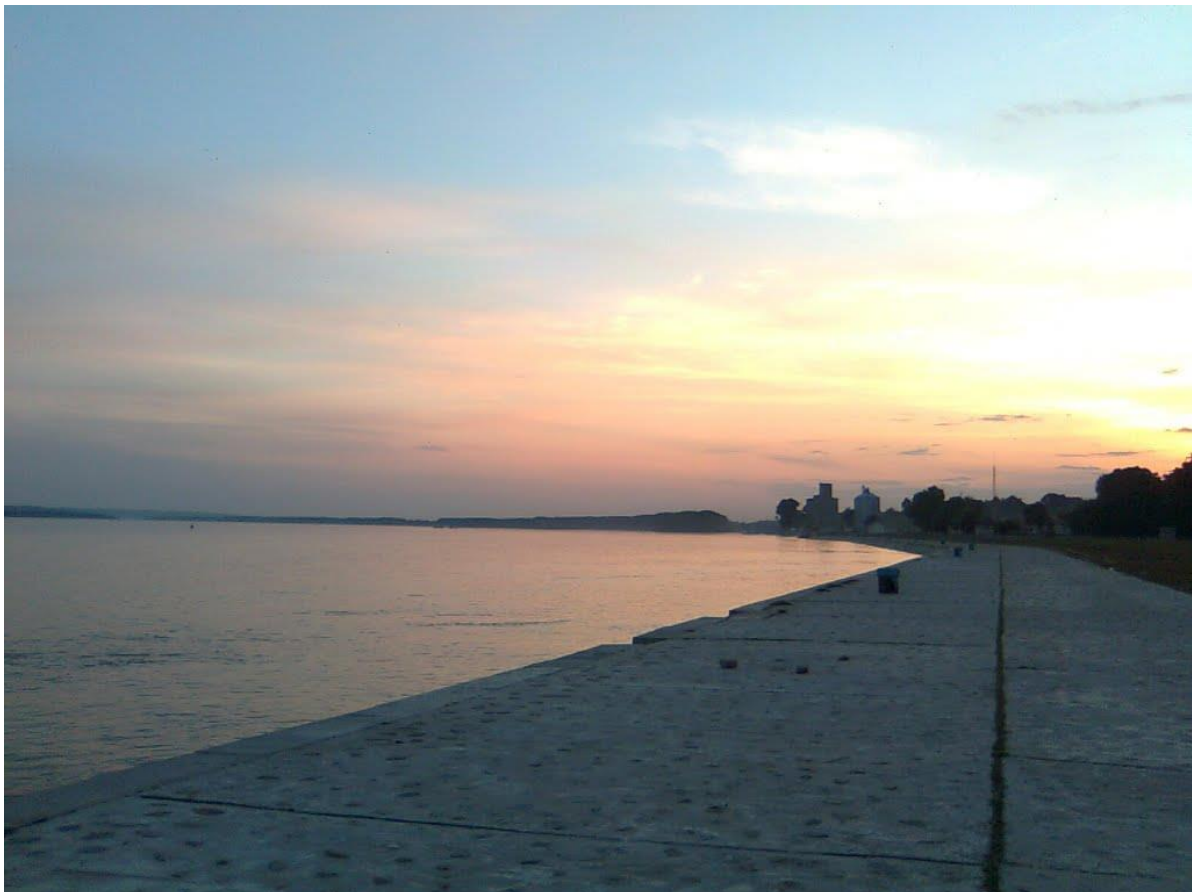
safety in case of flood or storm

- ☐ yes ☒ no

Parking fees/costs

- ☒ yes ☐ no

Berth for cereals



Berth for cereals

Danube km: 629.05 - 629.3

GPS coordinates:

North: 43° 46' 16.2"

East: 24° 31' 24"

berths information

length: 250 m

river bank

- ☒ L left river bank
☐ R right river bank
☐ T at the dam

location

- DPP "downstream" side of a power plant
DL "downstream" side of o lock (lock entrance area)
UL "upstream" side of a lock (lock entrance area)
UPP "upstream" side of a power plant
ARS along the river stretch
OTH others (before a harbour entrance in an old river branch)

local berths conditions

- 0 berthing permitted (i.e. anchoring or making fast to the bank)
1 berthing area reserved for pushing-navigation vessels that are required to carry one blue cone
2 berthing area reserved for pushing-navigation vessels that are required to carry two blue cones
3 berthing area reserved for pushing-navigation vessels that are required to carry three blue cones
OTH other restrictions (only for small motor crafts, only for border control, only for damaged vessels after an accident, max. time allowed for berthing,...))

facilities

stairs to go ashore

- ☒ yes ☐ no

possibility to load and unload cars from a vessel

- ☐ yes ☒ no

lighting

- ☒ yes ☐ no

river bank construction

- ☐ sheet pile wall
☒ embankment (slope)
☐ quay walls
☐ dam
☐ dolphins
☐ pontoon
☐ natural (wild)

specimen widths

- ☐ 1 beam
☐ 2 beams
☐ 3 beams
☒ 40

connections

ports/harbours in the surrounding area

- ☒ < 5 km Corabia

villages, cities in the surrounding area

- ☒ < 5 km Corabia

access road

- ☒ yes ☐ no

maintenance and disposal facilities

electricity supply

- ☐ yes ☒ no

fresh water supply

- ☐ yes ☒ no

waste disposal

- ☐ yes ☒ no

petrol station

- ☐ yes ☒ no

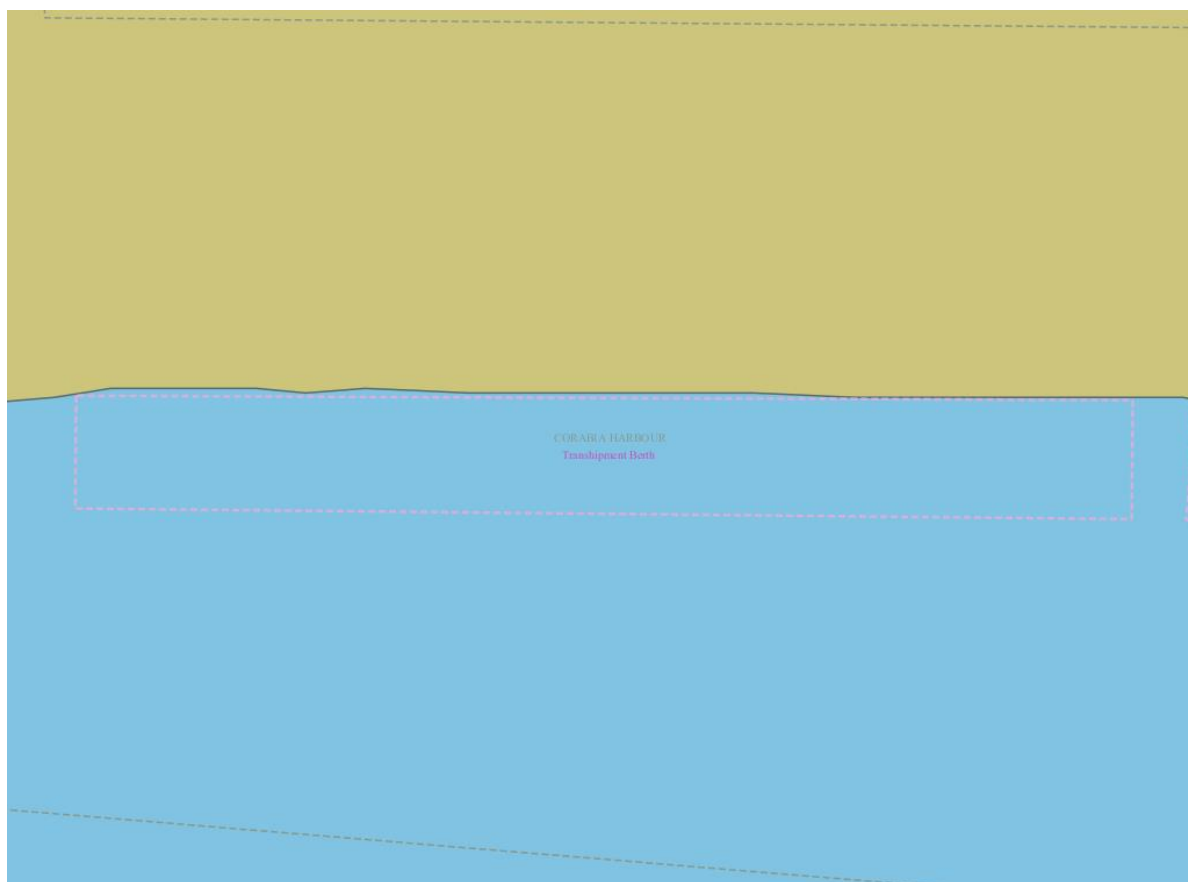
safety in case of flood or storm

- ☐ yes ☒ no

Parking fees/costs

- ☒ yes ☐ no

Berth for cereals



Berth for cereals

Danube km: 629.4 - 629.7

GPS coordinates:

North: 43° 46' 15.79"

East: 24° 31' 6.37"

berths information

length: 300 m

river bank

- ☒ L left river bank
☐ R right river bank
☐ T at the dam

location

- DPP "downstream" side of a power plant
DL "downstream" side of a lock (lock entrance area)
UL "upstream" side of a lock (lock entrance area)
UPP "upstream" side of a power plant
ARS along the river stretch
OTH others (before a harbour entrance in an old river branch)

local berths conditions

- 0 berthing permitted (i.e. anchoring or making fast to the bank)
1 berthing area reserved for pushing-navigation vessels that are required to carry one blue cone
2 berthing area reserved for pushing-navigation vessels that are required to carry two blue cones
3 berthing area reserved for pushing-navigation vessels that are required to carry three blue cones
OTH other restrictions (only for small motor crafts, only for border control, only for damaged vessels after an accident, max. time allowed for berthing,...))

facilities

stairs to go ashore

- ☒ yes ☐ no

possibility to load and unload cars from a vessel

- ☒ yes ☐ no

lighting

- ☐ yes ☒ no

river bank construction

- ☐ sheet pile wall
☒ embankment (slope)
☐ quay walls
☐ dam
☐ dolphins
☐ pontoon
☐ natural (wild)

specimen widths

- ☐ 1 beam
☐ 2 beams
☐ 3 beams
☒ 35

connections

ports/harbours in the surrounding area

- ☒ < 5 km Corabia

villages, cities in the surrounding area

- ☒ < 5 km Corabia

access road

- ☒ yes ☐ no

maintenance and disposal facilities

electricity supply

- ☐ yes ☒ no

fresh water supply

- ☐ yes ☒ no

waste disposal

- ☐ yes ☒ no

petrol station

- ☐ yes ☒ no

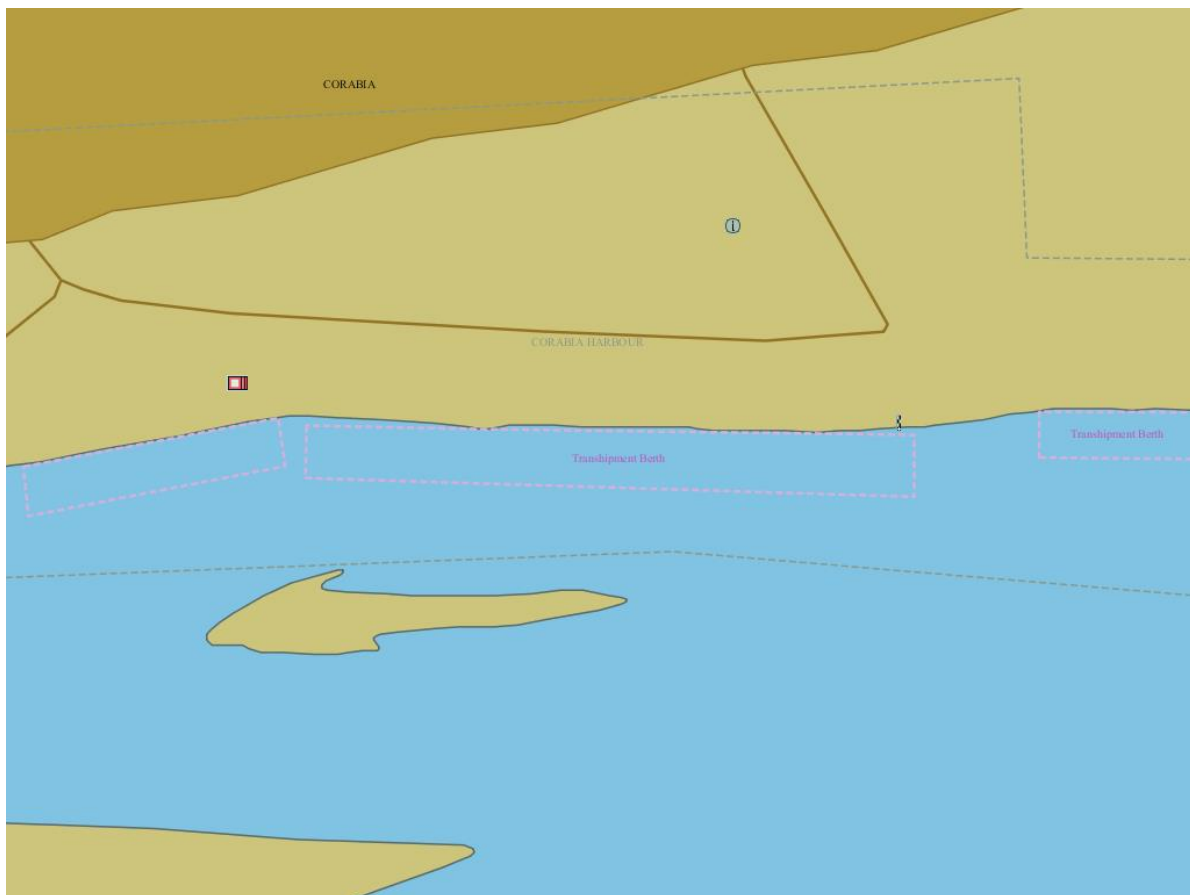
safety in case of flood or storm

- ☐ yes ☒ no

Parking fees/costs

- ☒ yes ☐ no

Transshipment Berth



Berth for cereals

Danube km: 629.7 - 629.8

GPS coordinates:

North: 43° 46' 15.54"

East: 24° 30' 54.16"

berths information

length: 100 m

river bank

- ☒ L left river bank
☐ R right river bank
☐ T at the dam

location

- DPP "downstream" side of a power plant
DL "downstream" side of a lock (lock entrance area)
UL "upstream" side of a lock (lock entrance area)
UPP "upstream" side of a power plant
ARS along the river stretch
OTH others (before a harbour entrance in an old river branch)

local berths conditions

- 0 berthing permitted (i.e. anchoring or making fast to the bank)
1 berthing area reserved for pushing-navigation vessels that are required to carry one blue cone
2 berthing area reserved for pushing-navigation vessels that are required to carry two blue cones
3 berthing area reserved for pushing-navigation vessels that are required to carry three blue cones
OTH other restrictions (only for small motor crafts, only for border control, only for damaged vessels after an accident, max. time allowed for berthing,...))

facilities

stairs to go ashore

- ☒ yes ☐ no

possibility to load and unload cars from a vessel

- ☐ yes ☒ no

lighting

- ☒ yes ☐ no

river bank construction

- ☐ sheet pile wall
☒ embankment (slope)
☐ quay walls
☐ dam
☐ dolphins
☐ pontoon
☐ natural (wild)

specimen widths

- ☐ 1 beam
☐ 2 beams
☐ 3 beams
☒ 30

connections

ports/harbours in the surrounding area

- ☒ < 5 km Corabia

villages, cities in the surrounding area

- ☒ < 5 km Corabia

access road

- ☒ yes ☐ no

maintenance and disposal facilities

electricity supply

- ☒ yes ☐ no

fresh water supply

- ☐ yes ☒ no

waste disposal

- ☐ yes ☒ no

petrol station

- ☐ yes ☒ no

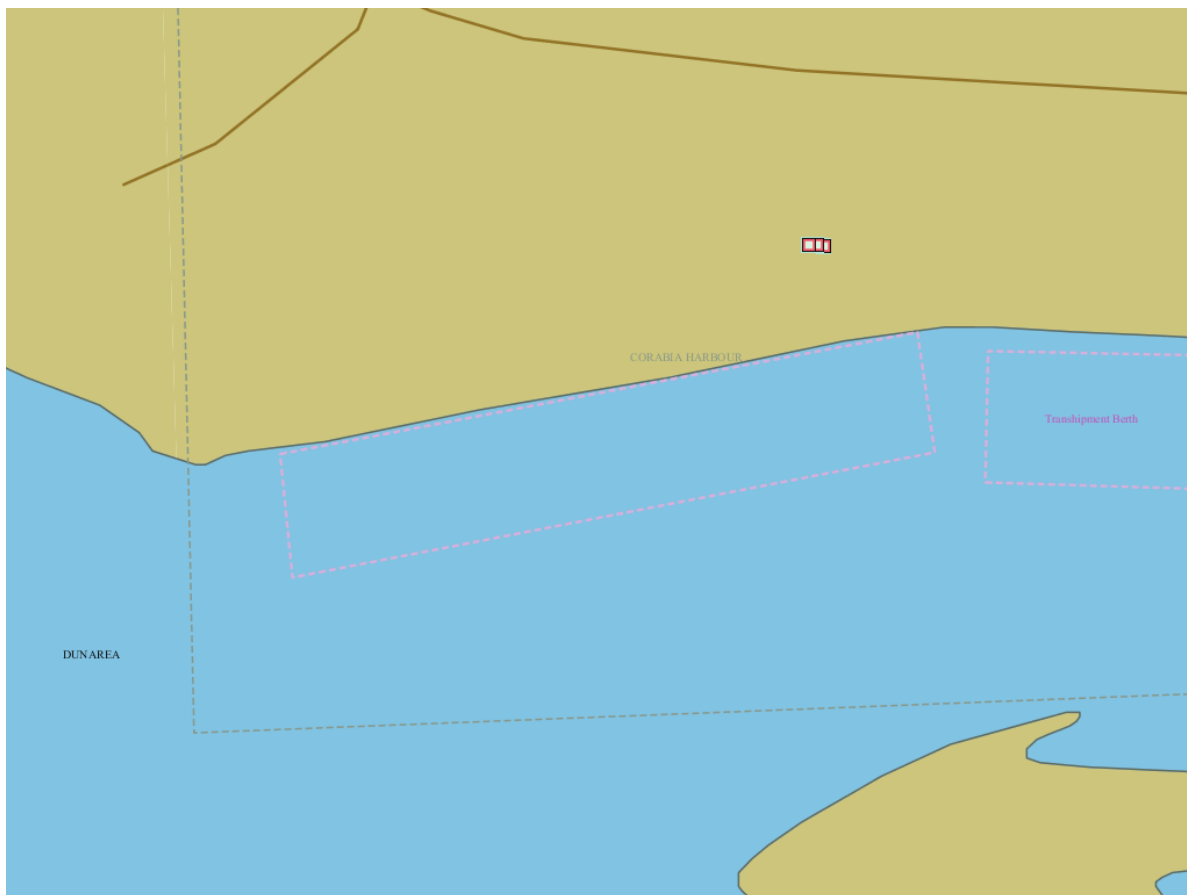
safety in case of flood or storm

- ☒ yes ☐ no

Parking fees/costs

- ☒ yes ☐ no

Berth for cereals



Heavy equipment berth

Danube km: 678,4 - 678,4

GPS coordinates:

North: 43° 44' 54.15"

East: 23° 57' 40.43"

berths information

length: 30 m

river bank

- ☒ L left river bank
☐ R right river bank
☐ T at the dam

location

- DPP "downstream" side of a power plant
DL "downstream" side of o lock (lock entrance area)
UL "upstream" side of a lock (lock entrance area)
UPP "upstream" side of a power plant
ARS along the river stretch
OTH others (before a harbour entrance in an old river branch)

local berths conditions

- 0 berthing permitted (i.e. anchoring or making fast to the bank)
1 berthing area reserved for pushing-navigation vessels that are required to carry one blue cone
2 berthing area reserved for pushing-navigation vessels that are required to carry two blue cones
3 berthing area reserved for pushing-navigation vessels that are required to carry three blue cones
OTH other restrictions (only for small motor crafts, only for border control, only for damaged vessels after an accident, max. time allowed for berthing,...))

facilities

stairs to go ashore

- ☒ yes ☐ no

possibility to load and unload cars from a vessel

- ☒ yes ☐ no

lighting

- ☒ yes ☐ no

river bank construction

- ☐ sheet pile wall
☐ embankment (slope)
☒ quay walls
☐ dam
☐ dolphins
☐ pontoon
☐ natural (wild)

specimen widths

- ☐ 1 beam
☐ 2 beams
☐ 3 beams
☒ 30

connections

ports/harbours in the surrounding area

- ☒ < 5 km Bechet

villages, cities in the surrounding area

- ☒ < 5 km Bechet

access road

- ☒ yes ☐ no

maintenance and disposal facilities

electricity supply

- ☒ yes ☐ no

fresh water supply

- ☐ yes ☒ no

waste disposal

- ☐ yes ☒ no

petrol station

- ☐ yes ☒ no

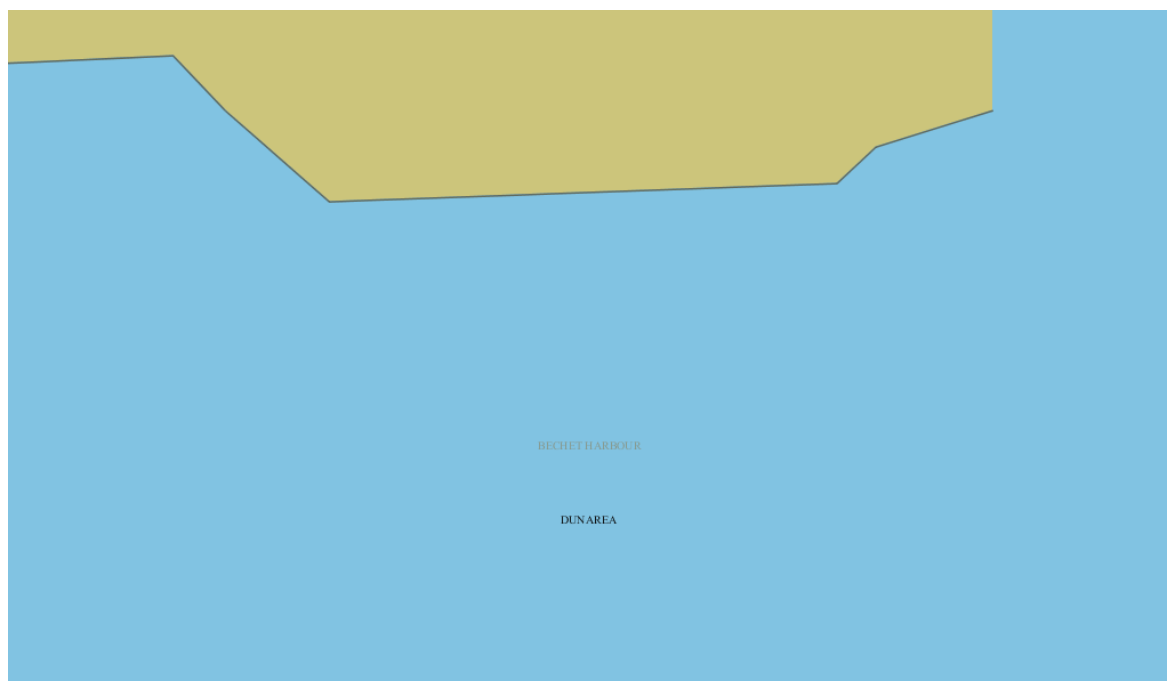
safety in case of flood or storm

- ☒ yes ☐ no

Parking fees/costs

- ☒ yes ☐ no

Heavy equipment berth



Berth without transshipment

Danube km: 678.4 - 678.6

GPS coordinates:

North: 43° 44' 53.82"

East: 23° 57' 34.8"

berths information

length: 200 m

river bank

- ☒ L left river bank
☐ R right river bank
☐ T at the dam

location

- DPP "downstream" side of a power plant
DL "downstream" side of a lock (lock entrance area)
UL "upstream" side of a lock (lock entrance area)
UPP "upstream" side of a power plant
ARS along the river stretch
OTH others (before a harbour entrance in an old river branch)

local berths conditions

- 0 berthing permitted (i.e. anchoring or making fast to the bank)
1 berthing area reserved for pushing-navigation vessels that are required to carry one blue cone
2 berthing area reserved for pushing-navigation vessels that are required to carry two blue cones
3 berthing area reserved for pushing-navigation vessels that are required to carry three blue cones
OTH other restrictions (only for small motor crafts, only for border control, only for damaged vessels after an accident, max. time allowed for berthing,...))

facilities

stairs to go ashore

- ☒ yes ☐ no

possibility to load and unload cars from a vessel

- ☐ yes ☒ no

lighting

- ☒ yes ☐ no

river bank construction

- ☐ sheet pile wall
☒ embankment (slope)
☐ quay walls
☐ dam
☐ dolphins
☐ pontoon
☐ natural (wild)

specimen widths

- ☐ 1 beam
☐ 2 beams
☐ 3 beams
☒ 50

connections

ports/harbours in the surrounding area

- ☒ < 5 km Bechet

villages, cities in the surrounding area

- ☒ < 5 km Bechet

access road

- ☒ yes ☐ no

maintenance and disposal facilities

electricity supply

- ☐ yes ☒ no

fresh water supply

- ☐ yes ☒ no

waste disposal

- ☐ yes ☒ no

petrol station

- ☐ yes ☒ no

safety in case of flood or storm

- ☐ yes ☒ no

Parking fees/costs

- ☒ yes ☐ no

Berth without transshipment



Berth without transshipment

Danube km: 678.6 - 678.7

GPS coordinates:

North: 43° 44' 53.81"

East: 23° 57' 27.26"

berths information

length: 100 m

river bank

- ☒ L left river bank
☐ R right river bank
☐ T at the dam

location

- DPP "downstream" side of a power plant
DL "downstream" side of a lock (lock entrance area)
UL "upstream" side of a lock (lock entrance area)
UPP "upstream" side of a power plant
ARS along the river stretch
OTH others (before a harbour entrance in an old river branch)

local berths conditions

- 0 berthing permitted (i.e. anchoring or making fast to the bank)
1 berthing area reserved for pushing-navigation vessels that are required to carry one blue cone
2 berthing area reserved for pushing-navigation vessels that are required to carry two blue cones
3 berthing area reserved for pushing-navigation vessels that are required to carry three blue cones
OTH other restrictions (only for small motor crafts, only for border control, only for damaged vessels after an accident, max. time allowed for berthing,...))

facilities

stairs to go ashore

- ☒ yes ☐ no

possibility to load and unload cars from a vessel

- ☐ yes ☒ no

lighting

- ☐ yes ☒ no

river bank construction

- ☐ sheet pile wall
☒ embankment (slope)
☐ quay walls
☐ dam
☐ dolphins
☐ pontoon
☐ natural (wild)

specimen widths

- ☐ 1 beam
☐ 2 beams
☐ 3 beams
☒ 50

connections

ports/harbours in the surrounding area

- ☒ < 5 km Bechet

villages, cities in the surrounding area

- ☒ < 5 km Bechet

access road

- ☒ yes ☐ no

maintenance and disposal facilities

electricity supply

- ☐ yes ☒ no

fresh water supply

- ☐ yes ☒ no

waste disposal

- ☐ yes ☒ no

petrol station

- ☐ yes ☒ no

safety in case of flood or storm

- ☐ yes ☒ no

Parking fees/costs

- ☒ yes ☐ no

Berth without transshipment



Berth without transshipment

Danube km: 679.0 - 679.1

GPS coordinates:

North: 43° 44' 54.05"

East: 23° 57' 20.77"

berths information

length: 100 m

river bank

- ☒ L left river bank
☐ R right river bank
☐ T at the dam

location

- DPP "downstream" side of a power plant
DL "downstream" side of a lock (lock entrance area)
UL "upstream" side of a lock (lock entrance area)
UPP "upstream" side of a power plant
ARS along the river stretch
OTH others (before a harbour entrance in an old river branch)

local berths conditions

- 0 berthing permitted (i.e. anchoring or making fast to the bank)
1 berthing area reserved for pushing-navigation vessels that are required to carry one blue cone
2 berthing area reserved for pushing-navigation vessels that are required to carry two blue cones
3 berthing area reserved for pushing-navigation vessels that are required to carry three blue cones
OTH other restrictions (only for small motor crafts, only for border control, only for damaged vessels after an accident, max. time allowed for berthing,...))

facilities

stairs to go ashore

- ☒ yes ☐ no

possibility to load and unload cars from a vessel

- ☐ yes ☒ no

lighting

- ☐ yes ☒ no

river bank construction

- ☐ sheet pile wall
☒ embankment (slope)
☐ quay walls
☐ dam
☐ dolphins
☐ pontoon
☐ natural (wild)

specimen widths

- ☐ 1 beam
☐ 2 beams
☐ 3 beams
☒ 50

connections

ports/harbours in the surrounding area

- ☒ < 5 km Bechet

villages, cities in the surrounding area

- ☒ < 5 km Bechet

access road

- ☒ yes ☐ no

maintenance and disposal facilities

electricity supply

- ☐ yes ☒ no

fresh water supply

- ☐ yes ☒ no

waste disposal

- ☐ yes ☒ no

petrol station

- ☐ yes ☒ no

safety in case of flood or storm

- ☐ yes ☒ no

Parking fees/costs

- ☒ yes ☐ no

Berth without transshipment



Mooring place

Danube km: 793.9 - 794.0

GPS coordinates:

North: 43° 59' 48.06"

East: 22° 55' 27.01"

berths information

length: 80 m

river bank

- ☒ L left river bank
☐ R right river bank
☐ T at the dam

location

- DPP "downstream" side of a power plant
DL "downstream" side of a lock (lock entrance area)
UL "upstream" side of a lock (lock entrance area)
UPP "upstream" side of a power plant
ARS along the river stretch
OTH others (before a harbour entrance in an old river branch)

local berths conditions

- 0 berthing permitted (i.e. anchoring or making fast to the bank)
1 berthing area reserved for pushing-navigation vessels that are required to carry one blue cone
2 berthing area reserved for pushing-navigation vessels that are required to carry two blue cones
3 berthing area reserved for pushing-navigation vessels that are required to carry three blue cones
OTH other restrictions (only for small motor crafts, only for border control, only for damaged vessels after an accident, max. time allowed for berthing,...))

facilities

stairs to go ashore

- ☒ yes ☐ no

possibility to load and unload cars from a vessel

- ☐ yes ☒ no

lighting

- ☒ yes ☐ no

river bank construction

- ☐ sheet pile wall
☐ embankment (slope)
☐ quay walls
☐ dam
☐ dolphins
☒ pontoon
☐ natural (wild)

specimen widths

- ☐ 1 beam
☐ 2 beams
☐ 3 beams
☒ 40

connections

ports/harbours in the surrounding area

- ☒ < 5 km Calafat

villages, cities in the surrounding area

- ☒ < 5 km Calafat

access road

- ☒ yes ☐ no

maintenance and disposal facilities

electricity supply

- ☒ yes ☐ no

fresh water supply

- ☒ yes ☐ no

waste disposal

- ☒ yes ☐ no

petrol station

- ☐ yes ☒ no

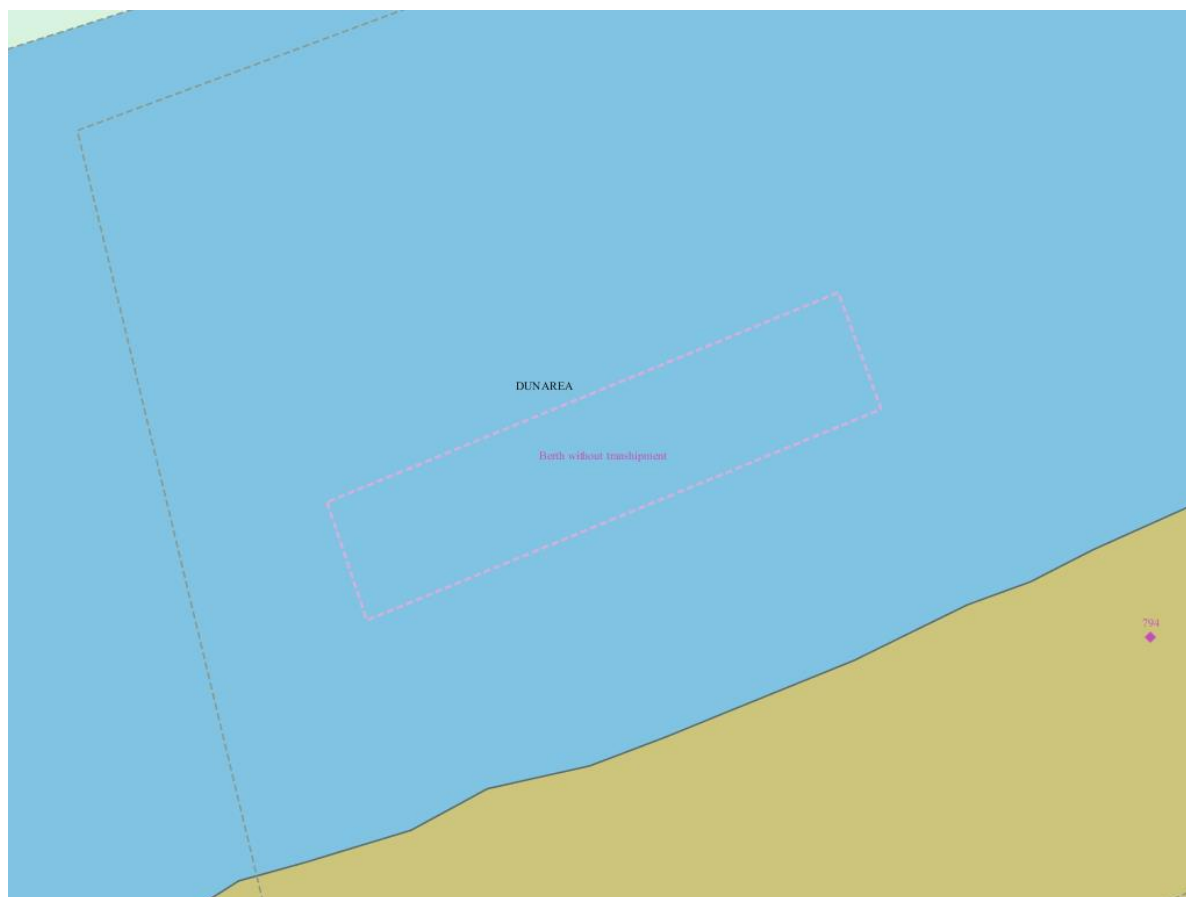
safety in case of flood or storm

- ☒ yes ☐ no

Parking fees/costs

- ☒ yes ☐ no

Mooring place



Berth for cereals - Pontoon

Danube km: 794 - 794

GPS coordinates:

North: 43° 59' 51.63"

East: 22° 55' 42.78"

berths information

length: 50 m

river bank

- ☒ L left river bank
☐ R right river bank
☐ T at the dam

location

- DPP "downstream" side of a power plant
DL "downstream" side of a lock (lock entrance area)
UL "upstream" side of a lock (lock entrance area)
UPP "upstream" side of a power plant
ARS along the river stretch
OTH others (before a harbour entrance in an old river branch)

local berths conditions

- 0 berthing permitted (i.e. anchoring or making fast to the bank)
1 berthing area reserved for pushing-navigation vessels that are required to carry one blue cone
2 berthing area reserved for pushing-navigation vessels that are required to carry two blue cones
3 berthing area reserved for pushing-navigation vessels that are required to carry three blue cones
OTH other restrictions (only for small motor crafts, only for border control, only for damaged vessels after an accident, max. time allowed for berthing,...))

facilities

stairs to go ashore

- ☒ yes ☐ no

possibility to load and unload cars from a vessel

- ☐ yes ☒ no

lighting

- ☒ yes ☐ no

river bank construction

- ☐ sheet pile wall
☐ embankment (slope)
☐ quay walls
☐ dam
☐ dolphins
☒ pontoon
☐ natural (wild)

specimen widths

- ☐ 1 beam
☐ 2 beams
☐ 3 beams
☒ 20

connections

ports/harbours in the surrounding area

- ☒ < 5 km Calafat
☒ < 5 km Vidin

villages, cities in the surrounding area

- ☒ < 5 km Calafat
☒ < 5 km Vidin

access road

- ☐ yes ☒ no

maintenance and disposal facilities

electricity supply

- ☒ yes ☐ no

fresh water supply

- ☒ yes ☐ no

waste disposal

- ☒ yes ☐ no

petrol station

- ☐ yes ☒ no

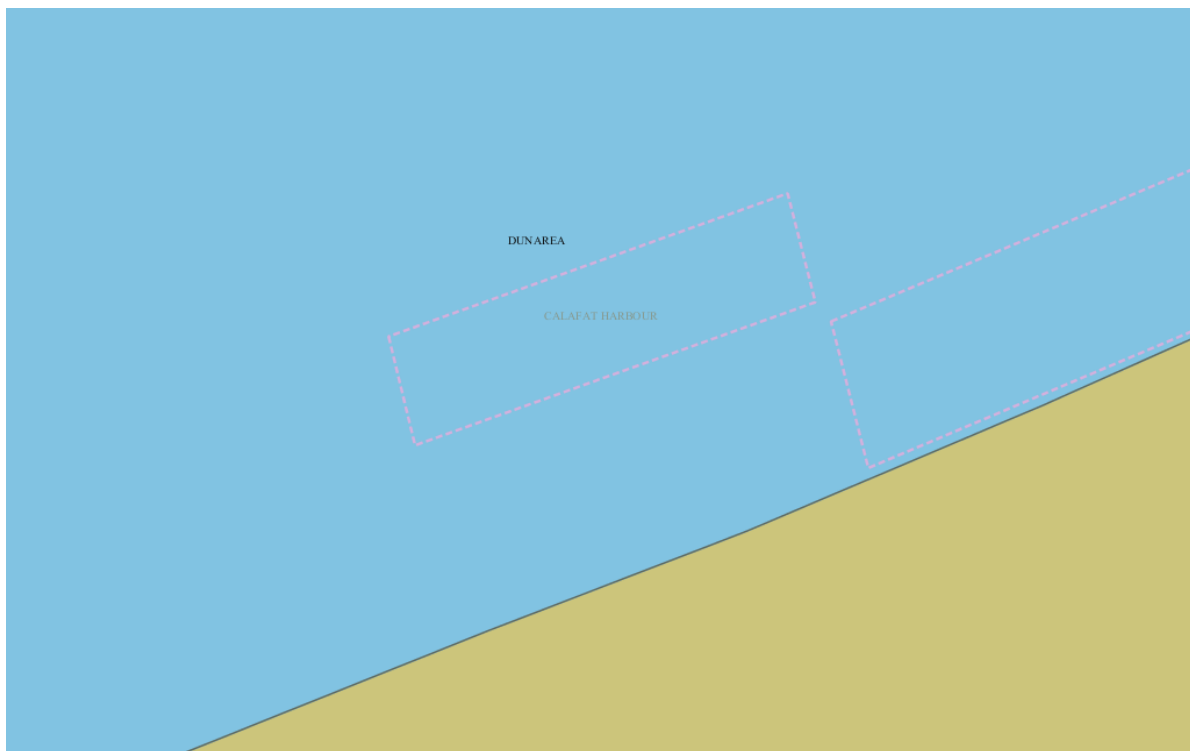
safety in case of flood or storm

- ☒ yes ☐ no

Parking fees/costs

- ☒ yes ☐ no

Berth for cereals - Pontoon



Berth for general cargo

Danube km: 794.3 - 794.5

GPS coordinates:

North: 43° 59' 51.95"

East: 22° 55' 46.17"

berths information

length: 200 m

river bank

- ☒ L left river bank
☐ R right river bank
☐ T at the dam

location

- DPP "downstream" side of a power plant
DL "downstream" side of a lock (lock entrance area)
UL "upstream" side of a lock (lock entrance area)
UPP "upstream" side of a power plant
ARS along the river stretch
OTH others (before a harbour entrance in an old river branch)

local berths conditions

- 0 berthing permitted (i.e. anchoring or making fast to the bank)
1 berthing area reserved for pushing-navigation vessels that are required to carry one blue cone
2 berthing area reserved for pushing-navigation vessels that are required to carry two blue cones
3 berthing area reserved for pushing-navigation vessels that are required to carry three blue cones
OTH other restrictions (only for small motor crafts, only for border control, only for damaged vessels after an accident, max. time allowed for berthing,...))

facilities

stairs to go ashore

- ☒ yes ☐ no

possibility to load and unload cars from a vessel

- ☒ yes ☐ no

lighting

- ☒ yes ☐ no

river bank construction

- ☐ sheet pile wall
☐ embankment (slope)
☒ quay walls
☐ dam
☐ dolphins
☐ pontoon
☐ natural (wild)

specimen widths

- ☐ 1 beam
☐ 2 beams
☐ 3 beams
☒ 50

connections

ports/harbours in the surrounding area

- ☒ < 5 km Calafat

villages, cities in the surrounding area

- ☒ < 5 km Calafat

access road

- ☒ yes ☐ no

maintenance and disposal facilities

electricity supply

- ☒ yes ☐ no

fresh water supply

- ☒ yes ☐ no

waste disposal

- ☒ yes ☐ no

petrol station

- ☐ yes ☒ no

safety in case of flood or storm

- ☒ yes ☐ no

Parking fees/costs

- ☒ yes ☐ no

Berth for general cargo



Mooring place - PONTOON

Danube km: 794.6 - 794.7

GPS coordinates:

North: 43° 59' 54.46"

East: 22° 55' 51.16"

berths information

length: 100 m

river bank

- ☐ L left river bank
☒ R right river bank
☐ T at the dam

location

- DPP "downstream" side of a power plant
 DL "downstream" side of a lock (lock entrance area)
 UL "upstream" side of a lock (lock entrance area)
 UPP "upstream" side of a power plant
 ARS along the river stretch
 OTH others (before a harbour entrance in an old river branch)

local berths conditions

- 0 berthing permitted (i.e. anchoring or making fast to the bank)
 1 berthing area reserved for pushing-navigation vessels that are required to carry one blue cone
 2 berthing area reserved for pushing-navigation vessels that are required to carry two blue cones
 3 berthing area reserved for pushing-navigation vessels that are required to carry three blue cones
 OTH other restrictions (only for small motor crafts, only for border control, only for damaged vessels after an accident, max. time allowed for berthing,...))

facilities

stairs to go ashore

- ☒ yes ☐ no

possibility to load and unload cars from a vessel

- ☐ yes ☒ no

lighting

- ☒ yes ☐ no

river bank construction

- ☐ sheet pile wall
☐ embankment (slope)
☐ quay walls
☐ dam
☐ dolphins
☒ pontoon
☐ natural (wild)

specimen widths

- ☐ 1 beam
☐ 2 beams
☐ 3 beams
☒ 50

connections

ports/harbours in the surrounding area

- ☒ < 5 km Calafat

villages, cities in the surrounding area

- ☒ < 5 km Calafat

access road

- ☒ yes ☐ no

maintenance and disposal facilities

electricity supply

- ☒ yes ☐ no

fresh water supply

- ☒ yes ☐ no

waste disposal

- ☒ yes ☐ no

petrol station

- ☐ yes ☒ no

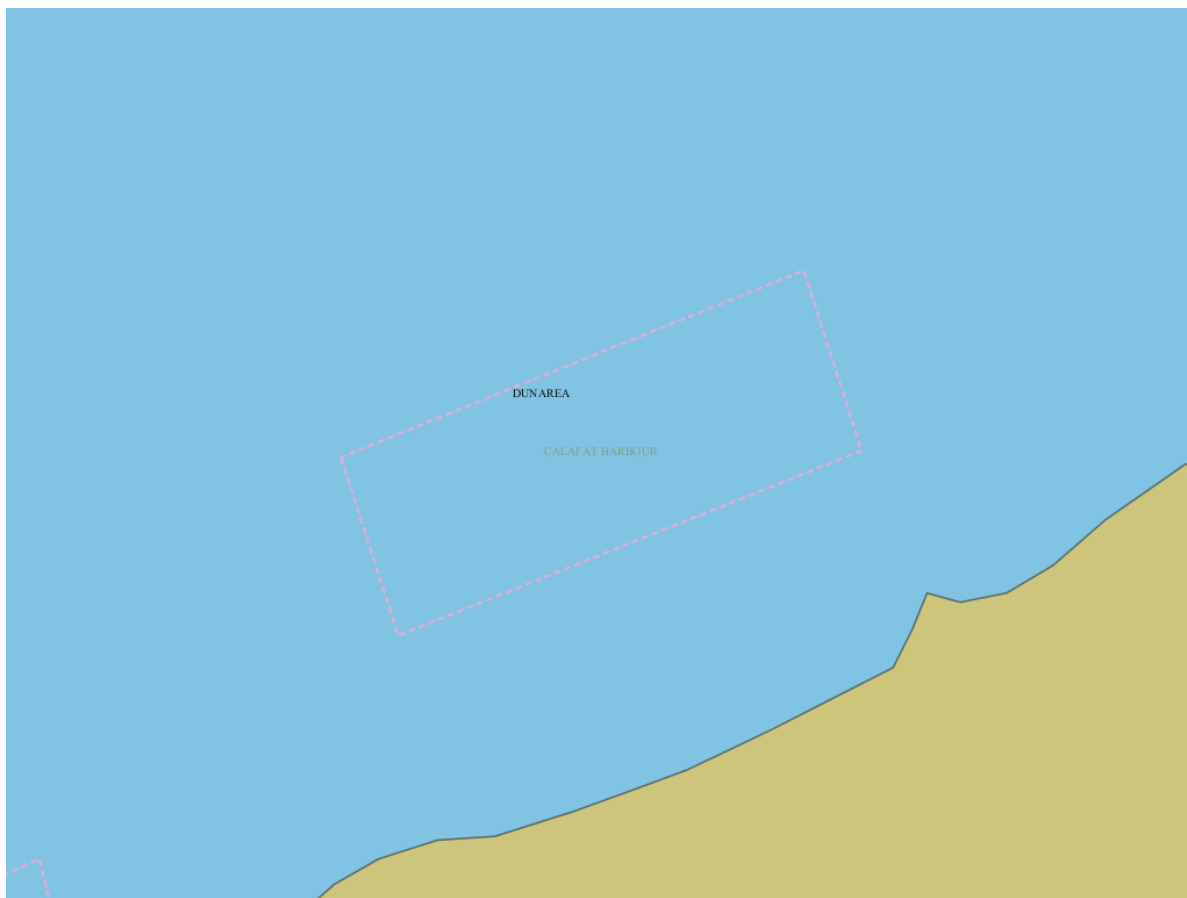
safety in case of flood or storm

- ☒ yes ☐ no

Parking fees/costs

- ☒ yes ☐ no

Mooring place - PONTOON



"Berth for loading - unloading general cargo"

Danube km: 931.0 - 931.2

GPS coordinates:

North: 44° 37' 11.88"

East: 22° 39' 1.71"

berths information

length: 200 m

river bank

- ☒ L left river bank
☐ R right river bank
☐ T at the dam

location

- DPP "downstream" side of a power plant
DL "downstream" side of a lock (lock entrance area)
UL "upstream" side of a lock (lock entrance area)
UPP "upstream" side of a power plant
ARS along the river stretch
OTH others (before a harbour entrance in an old river branch)

local berths conditions

- 0 berthing permitted (i.e. anchoring or making fast to the bank)
1 berthing area reserved for pushing-navigation vessels that are required to carry one blue cone
2 berthing area reserved for pushing-navigation vessels that are required to carry two blue cones
3 berthing area reserved for pushing-navigation vessels that are required to carry three blue cones
OTH other restrictions (only for small motor crafts, only for border control, only for damaged vessels after an accident, max. time allowed for berthing,...))

facilities

stairs to go ashore

- ☒ yes ☐ no

possibility to load and unload cars from a vessel

- ☒ yes ☐ no

lighting

- ☒ yes ☐ no

river bank construction

- ☐ sheet pile wall
☐ embankment (slope)
☒ quay walls
☐ dam
☐ dolphins
☐ pontoon
☐ natural (wild)

specimen widths

- ☐ 1 beam
☐ 2 beams
☐ 3 beams
☒ 45

connections

ports/harbours in the surrounding area

- ☒ < 5 km Drobeta Tr. Severin

villages, cities in the surrounding area

- ☒ < 5 km Drobeta Tr. Severin

access road

- ☒ yes ☐ no

maintenance and disposal facilities

electricity supply

- ☒ yes ☐ no

fresh water supply

- ☒ yes ☐ no

waste disposal

- ☒ yes ☐ no

petrol station

- ☐ yes ☒ no

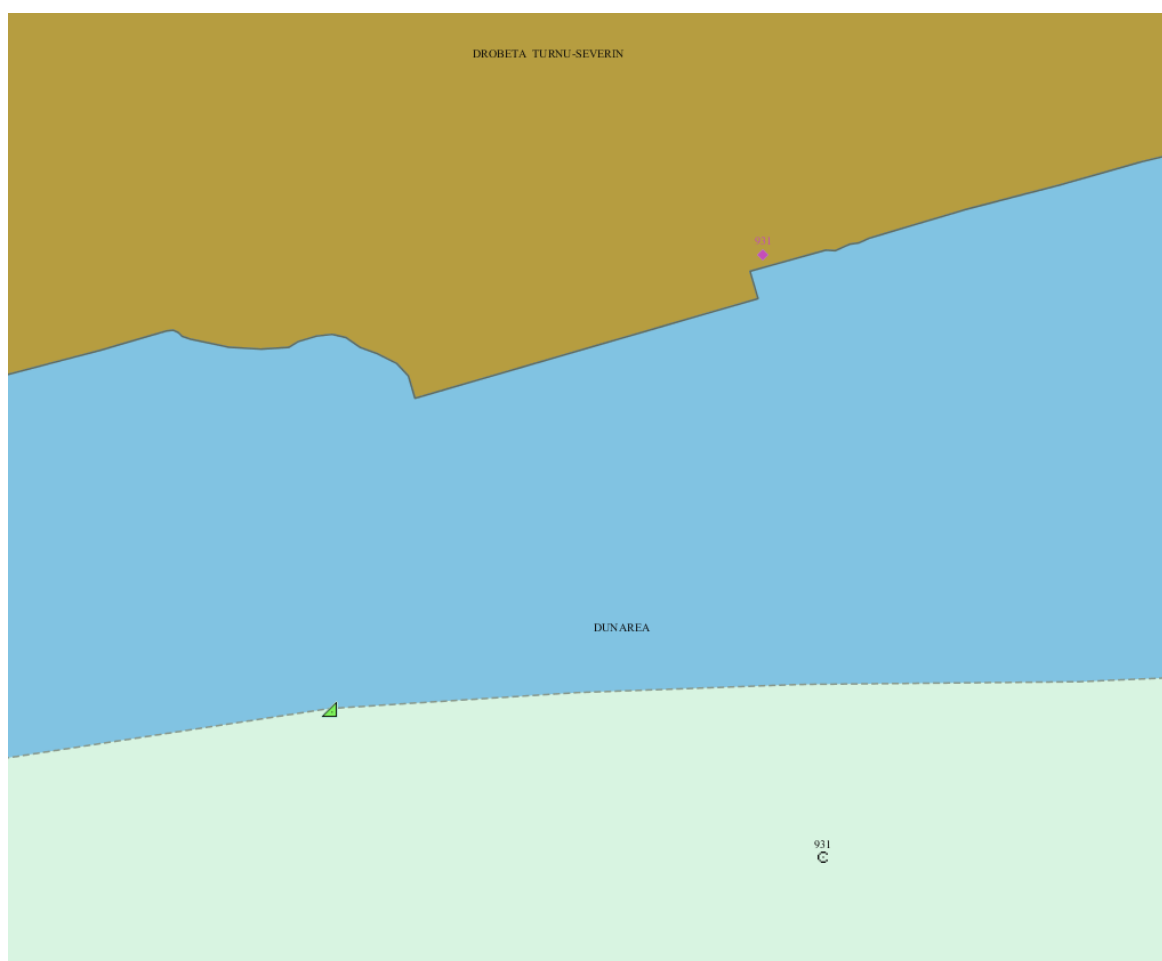
safety in case of flood or storm

- ☒ yes ☐ no

Parking fees/costs

- ☒ yes ☐ no

"Berth for loading - unloading general cargo"



"Mooring place - Naval Shipyard"

Danube km: 931.5 - 931.6

GPS coordinates:

North: 44° 37' 8.88"

East: 22° 38' 38.62"

berths information

length: 100 m

river bank

- ☒ L left river bank
☐ R right river bank
☐ T at the dam

location

- DPP "downstream" side of a power plant
DL "downstream" side of o lock (lock entrance area)
UL "upstream" side of a lock (lock entrance area)
UPP "upstream" side of a power plant
ARS along the river stretch
OTH others (before a harbour entrance in an old river branch)

local berths conditions

- 0 berthing permitted (i.e. anchoring or making fast to the bank)
1 berthing area reserved for pushing-navigation vessels that are required to carry one blue cone
2 berthing area reserved for pushing-navigation vessels that are required to carry two blue cones
3 berthing area reserved for pushing-navigation vessels that are required to carry three blue cones
OTH other restrictions (only for small motor crafts, only for border control, only for damaged vessels after an accident, max. time allowed for berthing,...))

facilities

stairs to go ashore

- ☒ yes ☐ no

possibility to load and unload cars from a vessel

- ☐ yes ☒ no

lighting

- ☒ yes ☐ no

river bank construction

- ☐ sheet pile wall
☐ embankment (slope)
☒ quay walls
☐ dam
☐ dolphins
☐ pontoon
☐ natural (wild)

specimen widths

- ☐ 1 beam
☐ 2 beams
☐ 3 beams
☒ 30

connections

ports/harbours in the surrounding area

- ☒ < 5 km Drobeta Tr. Severin

villages, cities in the surrounding area

none

access road

- ☐ yes ☒ no

maintenance and disposal facilities

electricity supply

- ☒ yes ☐ no

fresh water supply

- ☒ yes ☐ no

waste disposal

- ☒ yes ☐ no

petrol station

- ☐ yes ☒ no

safety in case of flood or storm

- ☒ yes ☐ no

Parking fees/costs

- ☐ yes ☒ no

"Mooring place - Naval Shipyard"



"Berth for loading - unloading general cargo"

Danube km: 932.6 - 932.9

GPS coordinates:

North: 44° 37' 3"

East: 22° 37' 46.73"

berths information

length: 300 m

river bank

- ☒ L left river bank
☐ R right river bank
☐ T at the dam

location

- DPP "downstream" side of a power plant
DL "downstream" side of a lock (lock entrance area)
UL "upstream" side of a lock (lock entrance area)
UPP "upstream" side of a power plant
ARS along the river stretch
OTH others (before a harbour entrance in an old river branch)

local berths conditions

- 0 berthing permitted (i.e. anchoring or making fast to the bank)
1 berthing area reserved for pushing-navigation vessels that are required to carry one blue cone
2 berthing area reserved for pushing-navigation vessels that are required to carry two blue cones
3 berthing area reserved for pushing-navigation vessels that are required to carry three blue cones
OTH other restrictions (only for small motor crafts, only for border control, only for damaged vessels after an accident, max. time allowed for berthing,...))

facilities

stairs to go ashore

- ☒ yes ☐ no

possibility to load and unload cars from a vessel

- ☒ yes ☐ no

lighting

- ☒ yes ☐ no

river bank construction

- ☐ sheet pile wall
☐ embankment (slope)
☒ quay walls
☐ dam
☐ dolphins
☐ pontoon
☐ natural (wild)

specimen widths

- ☐ 1 beam
☐ 2 beams
☐ 3 beams
☒ 35

connections

ports/harbours in the surrounding area

- ☒ < 5 km Drobeta Tr. Severin

villages, cities in the surrounding area

none

access road

- ☒ yes ☐ no

maintenance and disposal facilities

electricity supply

- ☒ yes ☐ no

fresh water supply

- ☒ yes ☐ no

waste disposal

- ☒ yes ☐ no

petrol station

- ☐ yes ☒ no

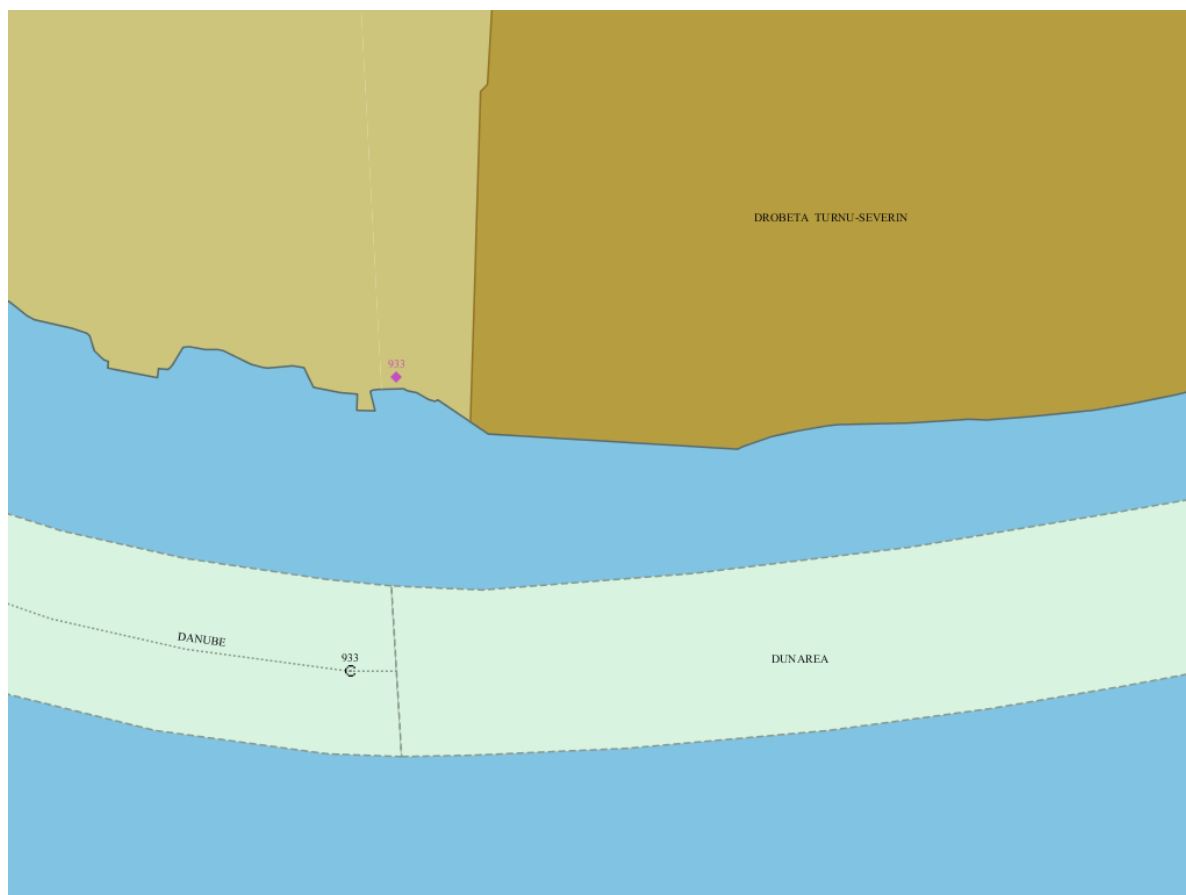
safety in case of flood or storm

- ☒ yes ☐ no

Parking fees/costs

- ☒ yes ☐ no

"Berth for loading - unloading general cargo"



Berth for general cargo

Danube km: 932.8 - 932.9

GPS coordinates:

North: 44° 37' 4.2"

East: 22° 37' 38.96"

berths information

length: 100 m

river bank

- ☒ L left river bank
☐ R right river bank
☐ T at the dam

location

- DPP "downstream" side of a power plant
DL "downstream" side of o lock (lock entrance area)
UL "upstream" side of a lock (lock entrance area)
UPP "upstream" side of a power plant
ARS along the river stretch
OTH others (before a harbour entrance in an old river branch)

local berths conditions

- 0 berthing permitted (i.e. anchoring or making fast to the bank)
1 berthing area reserved for pushing-navigation vessels that are required to carry one blue cone
2 berthing area reserved for pushing-navigation vessels that are required to carry two blue cones
3 berthing area reserved for pushing-navigation vessels that are required to carry three blue cones
OTH other restrictions (only for small motor crafts, only for border control, only for damaged vessels after an accident, max. time allowed for berthing,...))

facilities

stairs to go ashore

- ☐ yes ☒ no

possibility to load and unload cars from a vessel

- ☒ yes ☐ no

lighting

- ☒ yes ☐ no

river bank construction

- ☐ sheet pile wall
☐ embankment (slope)
☒ quay walls
☐ dam
☐ dolphins
☐ pontoon
☐ natural (wild)

specimen widths

- ☐ 1 beam
☐ 2 beams
☐ 3 beams
☒ 20

connections

ports/harbours in the surrounding area

- ☒ < 5 km Drobeta Tr. Severin
☒ < 5 km

villages, cities in the surrounding area

- ☒ < 5 km Drobeta Tr. Severin

access road

- ☒ yes ☐ no

maintenance and disposal facilities

electricity supply

- ☒ yes ☐ no

fresh water supply

- ☐ yes ☒ no

waste disposal

- ☒ yes ☐ no

petrol station

- ☐ yes ☒ no

safety in case of flood or storm

- ☒ yes ☐ no

Parking fees/costs

- ☒ yes ☐ no

Berth for general cargo



Berths area Basin Drobeta Tr. Severin Harbour

Danube km: 933.9 - 934.1

GPS coordinates:

North: 44° 37' 17.46"

East: 22° 36' 48.55"

berths information

length: 200 m

river bank

- ☒ L left river bank
☐ R right river bank
☐ T at the dam

location

- DPP "downstream" side of a power plant
DL "downstream" side of a lock (lock entrance area)
UL "upstream" side of a lock (lock entrance area)
UPP "upstream" side of a power plant
ARS along the river stretch
OTH others (before a harbour entrance in an old river branch)

local berths conditions

- 0 berthing permitted (i.e. anchoring or making fast to the bank)
1 berthing area reserved for pushing-navigation vessels that are required to carry one blue cone
2 berthing area reserved for pushing-navigation vessels that are required to carry two blue cones
3 berthing area reserved for pushing-navigation vessels that are required to carry three blue cones
OTH other restrictions (only for small motor crafts, only for border control, only for damaged vessels after an accident, max. time allowed for berthing,...))

facilities

stairs to go ashore

- ☒ yes ☐ no

possibility to load and unload cars from a vessel

- ☒ yes ☐ no

lighting

- ☒ yes ☐ no

river bank construction

- ☐ sheet pile wall
☐ embankment (slope)
☒ quay walls
☐ dam
☐ dolphins
☐ pontoon
☐ natural (wild)

specimen widths

- ☐ 1 beam
☐ 2 beams
☐ 3 beams
☒ 50

connections

ports/harbours in the surrounding area

- ☒ < 5 km Drobeta Tr. Severin

villages, cities in the surrounding area

none

access road

- ☒ yes ☐ no

maintenance and disposal facilities

electricity supply

- ☒ yes ☐ no

fresh water supply

- ☒ yes ☐ no

waste disposal

- ☒ yes ☐ no

petrol station

- ☐ yes ☒ no

safety in case of flood or storm

- ☒ yes ☐ no

Parking fees/costs

- ☒ yes ☐ no

Berths area Basin Drobeta Tr. Severin Harbour



Berth for general cargo

Danube km: 1048.74 - 1049.0

GPS coordinates:

North: 44° 43' 25.02"

East: 21° 36' 54.31"

berths information

length: 160 m

river bank

- ☒ L left river bank
☐ R right river bank
☐ T at the dam

location

- DPP "downstream" side of a power plant
DL "downstream" side of a lock (lock entrance area)
UL "upstream" side of a lock (lock entrance area)
UPP "upstream" side of a power plant
ARS along the river stretch
OTH others (before a harbour entrance in an old river branch)

local berths conditions

- 0 berthing permitted (i.e. anchoring or making fast to the bank)
1 berthing area reserved for pushing-navigation vessels that are required to carry one blue cone
2 berthing area reserved for pushing-navigation vessels that are required to carry two blue cones
3 berthing area reserved for pushing-navigation vessels that are required to carry three blue cones
OTH other restrictions (only for small motor crafts, only for border control, only for damaged vessels after an accident, max. time allowed for berthing,...))

facilities

stairs to go ashore

- ☒ yes ☐ no

possibility to load and unload cars from a vessel

- ☒ yes ☐ no

lighting

- ☒ yes ☐ no

river bank construction

- ☐ sheet pile wall
☐ embankment (slope)
☒ quay walls
☐ dam
☐ dolphins
☐ pontoon
☐ natural (wild)

specimen widths

- ☐ 1 beam
☐ 2 beams
☐ 3 beams
☒ 50

connections

ports/harbours in the surrounding area

- ☒ < 5 km Moldova Veche

villages, cities in the surrounding area

- ☒ < 5 km Moldova Veche

access road

- ☒ yes ☐ no

maintenance and disposal facilities

electricity supply

- ☒ yes ☐ no

fresh water supply

- ☒ yes ☐ no

waste disposal

- ☒ yes ☐ no

petrol station

- ☐ yes ☒ no

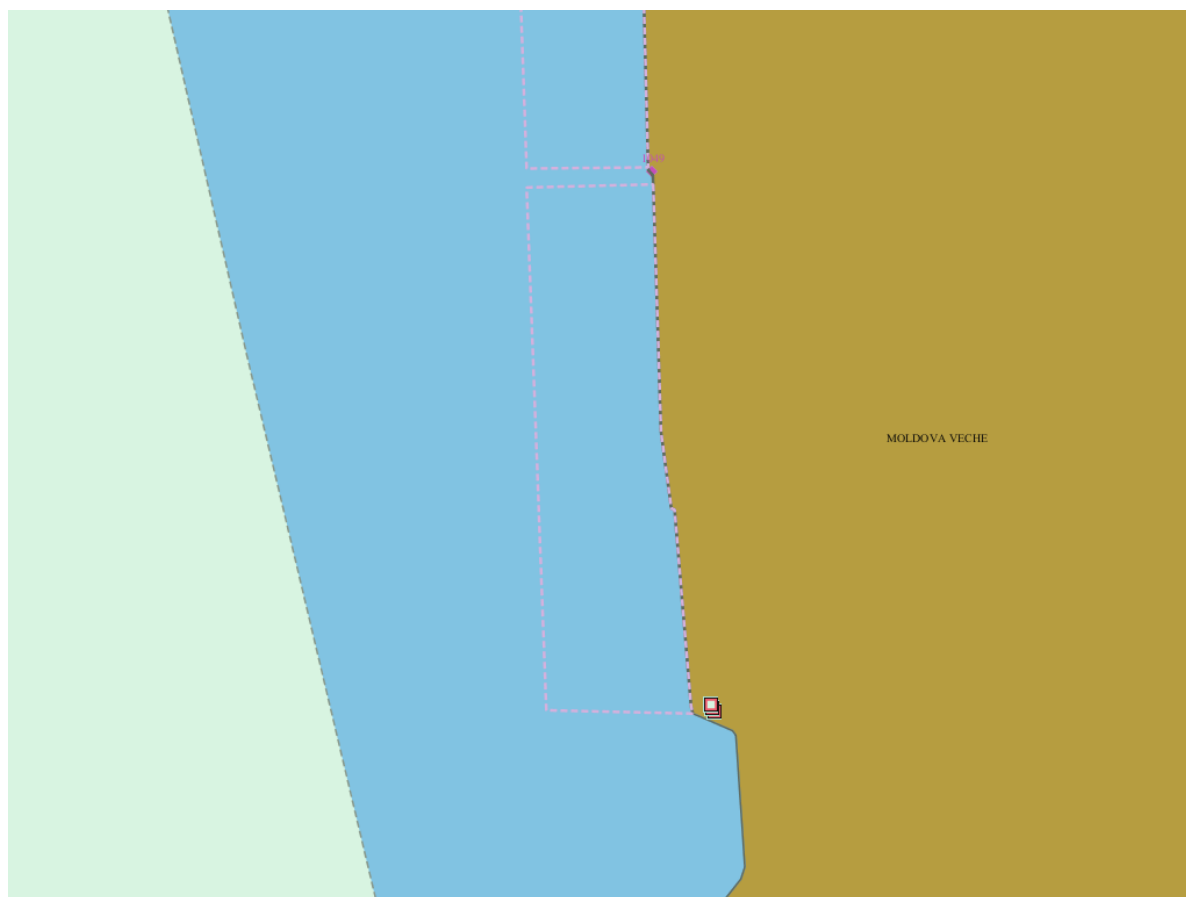
safety in case of flood or storm

- ☒ yes ☐ no

Parking fees/costs

- ☒ yes ☐ no

Berth for general cargo



Berth for general cargo and cereals

Danube km: 1049.0 - 1049.3

GPS coordinates:

North: 44° 43' 34.28"

East: 21° 36' 53.76"

berths information

length: 300 m

river bank

- ☒ L left river bank
☐ R right river bank
☐ T at the dam

location

- DPP "downstream" side of a power plant
DL "downstream" side of a lock (lock entrance area)
UL "upstream" side of a lock (lock entrance area)
UPP "upstream" side of a power plant
ARS along the river stretch
OTH others (before a harbour entrance in an old river branch)

local berths conditions

- 0 berthing permitted (i.e. anchoring or making fast to the bank)
1 berthing area reserved for pushing-navigation vessels that are required to carry one blue cone
2 berthing area reserved for pushing-navigation vessels that are required to carry two blue cones
3 berthing area reserved for pushing-navigation vessels that are required to carry three blue cones
OTH other restrictions (only for small motor crafts, only for border control, only for damaged vessels after an accident, max. time allowed for berthing,...))

facilities

stairs to go ashore

- ☒ yes ☐ no

possibility to load and unload cars from a vessel

- ☒ yes ☐ no

lighting

- ☒ yes ☐ no

river bank construction

- ☐ sheet pile wall
☐ embankment (slope)
☒ quay walls
☐ dam
☐ dolphins
☐ pontoon
☐ natural (wild)

specimen widths

- ☐ 1 beam
☐ 2 beams
☐ 3 beams
☒ 50

connections

ports/harbours in the surrounding area

- ☒ < 5 km Moldova Veche

villages, cities in the surrounding area

- ☒ < 5 km Moldova Veche

access road

- ☒ yes ☐ no

maintenance and disposal facilities

electricity supply

- ☒ yes ☐ no

fresh water supply

- ☒ yes ☐ no

waste disposal

- ☒ yes ☐ no

petrol station

- ☐ yes ☒ no

safety in case of flood or storm

- ☒ yes ☐ no

Parking fees/costs

- ☒ yes ☐ no

Berth for general cargo and cereals



end of document